

## District Schools

### **Bettendorf High School**

3333 18th St. | (563) 332-7001

Joy Kelly, Principal

### **Edison Academy**

*Alternative High School Program*

438 16th St. | (563) 359-9375

Tammy Chelf, Student Services Coordinator

### **Bettendorf Middle School**

2030 Middle Rd. | (563) 359-3686

Lisa Reid, Principal

### **Grant Wood Elementary**

1423 Hillside Dr. | (563) 359-8277

John Cain, Principal

### **Herbert Hoover Elementary**

3223 S. Hampton Dr. | (563) 332-8636

Karen Allison, Principal

### **Mark Twain Elementary**

1620 Lincoln Rd. | (563) 359-8263

Caroline Olson, Principal

### **Neil Armstrong Elementary**

3311 Central Ave. | (563) 359-8275

David Hlas, Principal

### **Paul Norton Elementary**

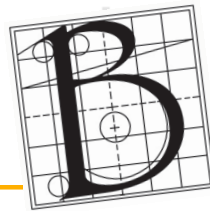
4485 Greenbrier Dr. | (563) 332-8936

Brian Walthart, Principal

### **Thomas Jefferson Elementary**

610 Holmes St. | (563) 359-8261

Lana LaSalle, Principal



## Board of Education

Paul Castro  
Andrew Champion  
Adam Holland  
Richard Lynch

Michael Pyevich  
Gordon Staley  
Stacey Struck

## Administration

Michael Raso  
Superintendent

Dallon Christensen  
Director of Finance

Heather Stocking  
Director of Human Resources

Kay Ingham  
Director of Curriculum & Special Services

Jillian Dotson  
Associate Director of Curriculum & Special Services

Celeste Miller  
Director of Communications

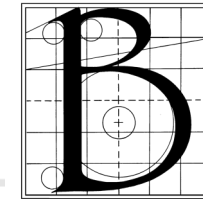
Kayla Leu  
Director of Food Service

Chris Andrus  
Director of Operations

Jennifer Like  
Director of Instructional Technology  
& Data Management

Sean McGinn  
Director of Technology

# District Quick Facts 2018-2019



Bettendorf  
Community  
School District



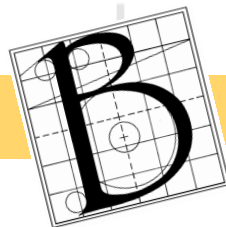
[www.bettendorf.k12.ia.us](http://www.bettendorf.k12.ia.us)

**Bettendorf Community School District  
Administration Center**

3311 18th St., Bettendorf, IA 52722  
(563) 359-3681

# Quick Facts

## 2018-2019 Data



### District Enrollment **4,729** Oct. 2018

(Total doesn't including preschool with private providers)

<b>Bettendorf High School (9-12)</b>	1,550
<b>Bettendorf Middle School (6-8)</b>	1,102
<b>Grant Wood Elementary (PS-5)</b>	409
<b>Herbert Hoover Elementary (K-5)</b>	451
<b>Mark Twain Elementary (PS-5)</b>	311
<b>Neil Armstrong Elementary (PS-5)</b>	307
<b>Paul Norton Elementary (K-5)</b>	447
<b>Thomas Jefferson Elementary (PS-5)</b>	150
<b>Preschool with Private Providers</b>	232

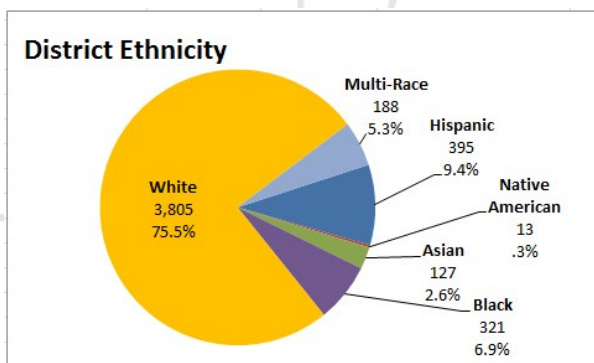
### Class Size Limits

**Grades K-3 - 20-23**  
**Grades 4-5 - 23-26**

Whenever possible, the district will attempt to keep kindergarten, 1st, 2nd, and 3rd grade classes at 22 students or below, and 4th - 5th grade classes at 25 or below – effective with the kindergarten class of 2016 going forward. Other class will be grandfathered in with pre-existing class size guidelines: 1st-2nd - 25, 3rd-5th - 27.

### Free & Reduced **33%** Oct. 2017

### Ethnicity 2017-2018 data



**The Bettendorf Community School District is a flagship school district established in 1907.** The district provides a wide variety of educational programs for preschool through 12th grade students living within the district boundaries, nearly nine square miles of Bettendorf, Iowa as well as a small section of Davenport, Iowa. There are eight schools in the district: six elementary schools, one middle school, and one high school with an alternative high school program (shared with two other neighboring school districts).

Linking learning to life with

**PASSION  
PURPOSE &  
PRIDE**

so that all students can

**MAKE A  
POSITIVE  
DIFFERENCE**

BCSD  Vision

**More Data & Reporting Information**  
<http://bettendorf.k12.ia.us/our-district/data-reporting>

A staff of 672 is employed by the Bettendorf Community School District in full or part-time positions for the 2018-2019 school year.

### Teacher Profile

All BCSD classes are taught by highly qualified teachers with six National Board Certified Teachers on staff.

#### Average years with BCSD - **9.3 Years**

State average - 10.3

#### Average years in education - **12.1 Years**

State average - 13.4

#### Percentage of teachers with advanced degrees - **29.7%** (State average - 34.7%)

#### Average age of teachers - **39.3**

State average - 40.7

#### Average teacher salary - **\$57,765**

State average - \$58,703

*Iowa Department of Education 2017-2018 Iowa Public School and AEA Teacher Information*

### High School

Graduation Rate **94.95%** (State 90.98%)  
2017 - 4-year data

*In the 2017 Iowa AP Index, BHS was ranked 27th in the State of Iowa AP Index for the Top 50 Schools by the University of Iowa's Belin-Blank Center for Gifted Education.*

### Financial Profile 2018-2019

<b>Operating Expenditures</b>	\$50,688,102
<b>Assessed Valuation Per Pupil</b>	\$357,065
<b>Per Pupil Expenditure (operating fund)</b>	\$11,119
<b>Tuition Cost</b>	\$6,805
<b>Tax rate per \$1,000 of Taxable Valuation</b>	\$13.97
<b>\$.01 Local Option Sales Tax Revenue</b>	\$4,179,401
<b>Open Enrollment Revenue</b>	\$5,228,949
<b>Average Teacher Salary</b>	\$57,675

### Equity & Anti-Harassment Statement

It is the policy of the Bettendorf Community School District not to illegally discriminate on the basis of race, color, national origin, gender, disability, religion, creed, age (for employment), marital status (for programs), sexual orientation, gender identity and socioeconomic status (for programs) in its educational programs and its employment practices. There is a grievance procedure for processing complaints of discrimination. If you have questions or a grievance related to this policy please contact the district's Equity Coordinator, Lana LaSalle (563) 359-8261, [lalsalle@bettendorf.k12.ia.us](mailto:lalsalle@bettendorf.k12.ia.us)